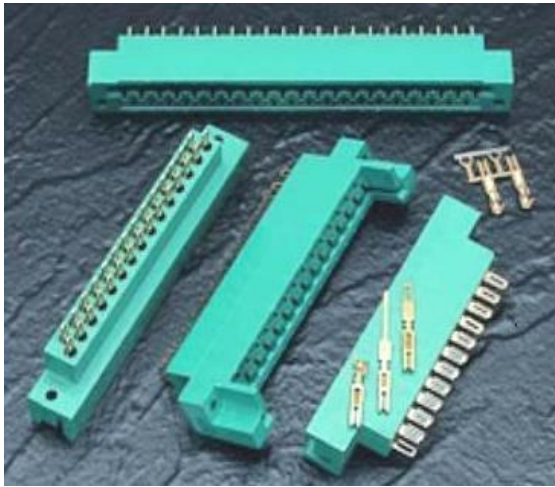




415/438 SERIES

METAL TO METAL (TWO PIECE) CONNECTOR

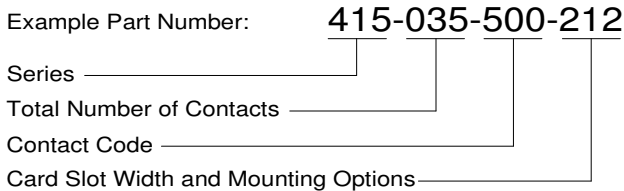


FEATURES:

- .200" (5.08mm) Contact Spacing x .125" (3.18mm) or .150" (3.81mm) Row Spacing with staggered Grid
- Accepts .062" (1.57mm) or .093" (2.36mm) Nominal Thickness P.C. Board
- Edacon Hermaphroditic Contact Mating Design
- Contact Termination Options include Crimp, P.C. Tail, Wire Hole and Wire Wrap
- Open or Closed Card Slot Ends, Card Guides Optional
- Accepts Polarizing Keys without Loss of Contact Position
- 415 series without Card Guides Designed to mate with 421 Series, 415 Series with Card Guides design to mate with 422 Series, 438 Series Designed to mate with 423 Series
- RoHS Compliant & UL Recognized

Specifications:

Insulator Material	UL 94V-0 Diallyl Phthalate, Green Color
Contact Material	Copper Alloy
Contact Plating	Gold Plating over Nickel over entire contact
Current Rating	10A Continuous
Contact Resistance	10 milliohms maximum
Dielectric Withstanding Voltage	2000 VAC rms at sea level
Insulation Resistance	5000 Megohms minimum
Operating Temperature	-65°C to +125°C
Insertion Force	2 to 16 Oz (0.56 to 4.45N) per contact position
Withdrawal Force	2 to 16 Oz (0.56 to 4.45N) per contact position



Series

415
438

Insulator Card Slot Ends

Closed Card Slot Ends
Open Card Slot Ends

Total Number of Contacts 017, 023, 029, 35, 041 or 047

Ordering Code Notes

- Crimp contacts are also available for the 415 and 438 series connectors. Contacts may be ordered separately for pre-wired or select position assembly.

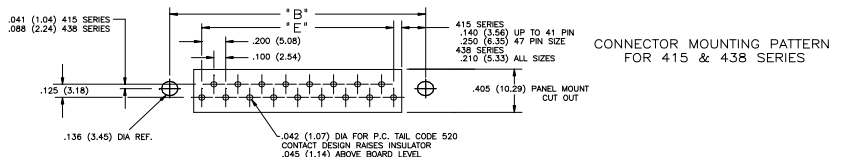
Part Number	Description	Silhouette
516-290-500	Wire Hole	
516-290-520	P.C. Tail	
516-290-540	Wire Wrap	
516-290-541	Wire Wrap	
516-290-542	Wire Wrap	
516-290-590	Crimp (Loose)	
516-290-591	Crimp - 1800 Contact Per Reel	

- For contact installation, removal and crimping tools, Please contact EDAC.
- Mounting Options 212 and 222 are available on the 415 series connectors only.

Contact Code	Description & Tail Size	Tail Length "G"
000	No Contacts Assembled	-----
500	Wire Hole .110 x .024 (2.79 x 0.61)	.245 (6.22)
520	P.C. Tail .25 x .024 (0.64 x 0.61)	.215 (5.46)
540	Wire Wrap .050 x .024 (1.27 x 0.61)	.600 (15.24)
541	Wire Wrap .026 x .024 (0.66 x 0.61)	.620 (15.70)
542	Wire Wrap .050 x .024 (1.27 x 0.61)	.790 (20.07)

Card Slot Width and Mounting Options

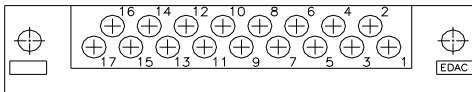
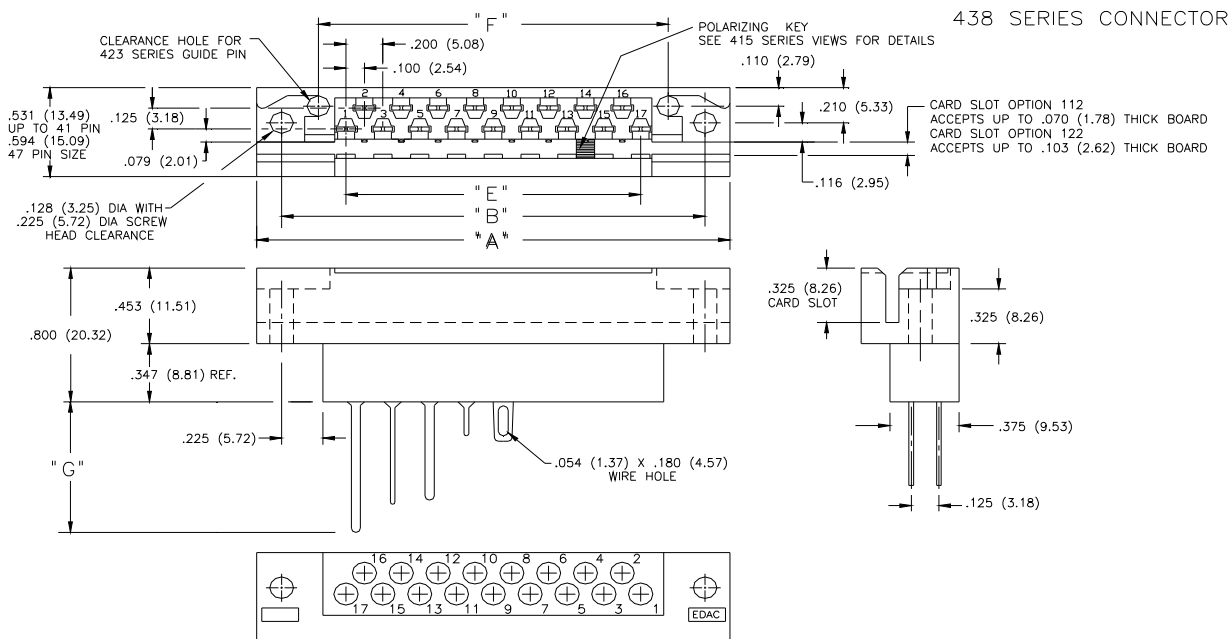
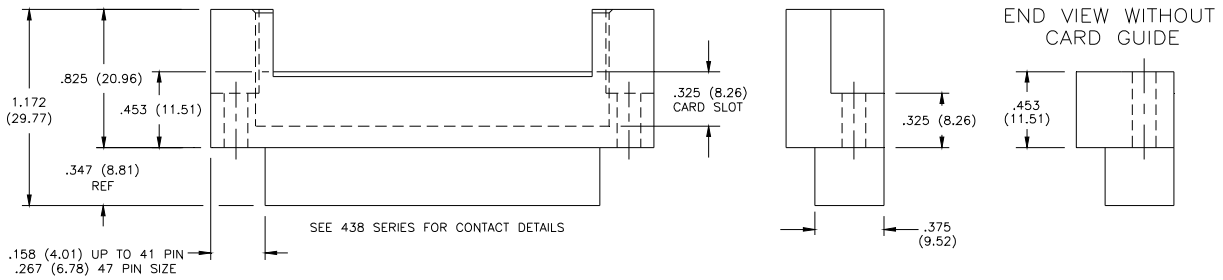
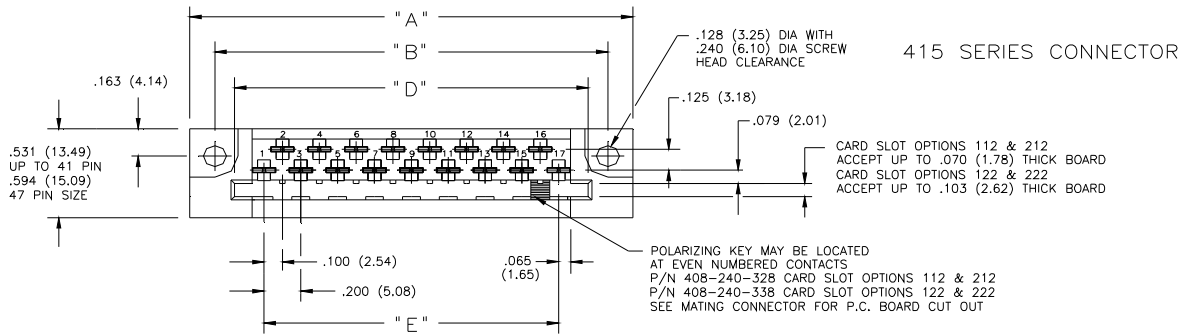
Card Slot Width and Mounting Options	Description
112	Accepts .062 (1.57) Board .128 (3.25) Dia Mounting Holes
122	Accepts .093 (2.36) Board .128 (3.25) Dia Mounting Holes
112	Accepts .062 (1.57) Board .128 (3.25) Dia Mounting Holes With Card Guides
222	Accepts .093 (2.36) Board .128 (3.25) Dia Mounting Holes With Card Guides





415/438 SERIES

METAL TO METAL (TWO PIECE) CONNECTOR



NUMBER OF CONTACTS	"A"		"B"		"D"		"E"		"F"					
	415		438		415		415, 438		438					
	inch	mm	inch	mm	inch	mm	inch	mm	inch	mm				
17	2.406	61.11	2.570	65.28	2.134	54.20	2.300	58.42	1.920	48.77	1.600	40.64	1.900	48.26
23	3.006	76.35	3.170	80.52	2.734	69.44	2.900	73.66	2.520	64.01	2.200	55.88	2.500	63.50
29	3.606	91.59	3.770	95.76	3.334	84.68	3.500	88.90	3.120	79.25	2.800	71.12	3.100	78.74
35	4.206	106.83	4.370	111.00	3.934	99.92	4.100	104.14	3.720	94.49	3.400	86.36	3.700	93.98
41	4.806	122.07	4.970	126.24	4.534	115.16	4.700	119.38	4.320	109.73	4.000	101.60	4.300	109.22
47	5.620	142.75	5.570	141.48	5.352	135.94	5.300	134.62	5.030	127.76	4.600	116.84	4.900	124.46