

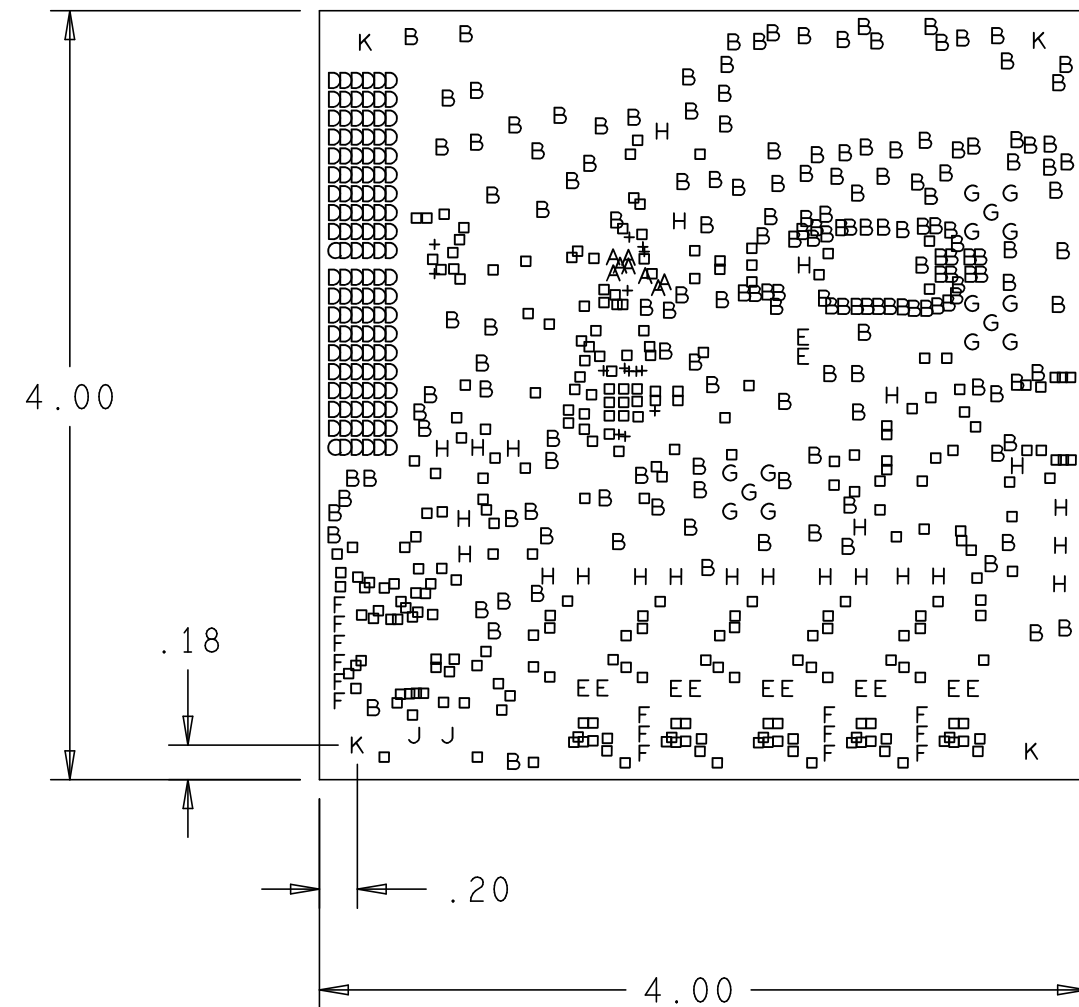
REVISIONS			
REV	DESCRIPTION	DATE	APPROVED
A	INITIAL RELEASE	2NOV10	N.E.
B	ADDED AVDD_L_IN VALUE CHANGES	2MAR11	B.H.

NOTES:

- MATERIALS; FR-4, IN ACCORDANCE WITH IPC-L-130 (LATEST REV.). GLASS FABRIC BASE, EPOXY RESIN, FIRE RESISTANT.
- BONDING AGENT; PREIMPREGNATED B STAGE EPOXY GLASS CLOTH IN ACCORDANCE WITH IPC-L-109 (LATEST REV.).
- CLADDING; EXTERNAL LAYERS 1/2 OZ. COPPER, OVERPLATE TO 1 1/2 OZ. INTERNAL SIGNAL LAYERS 1 OZ. COPPER. INTERNAL PLANE LAYERS 1 OZ. COPPER.
- SOLDER MASK; SHALL BE BLUE LIQUID PHOTOIMAGABLE (LPI) APPLIED ON BOTH SIDES OVER BARE COPPER AND SHALL MEET IPC-SM-840 (LATEST REV.) CLASS 3.
- SILK SCREEN; SHALL BE PERMANENT NON-CONDUCTIVE EPOXY INK, COLOR WHITE.
- U.L. RATING; 94VO MINIMUM.

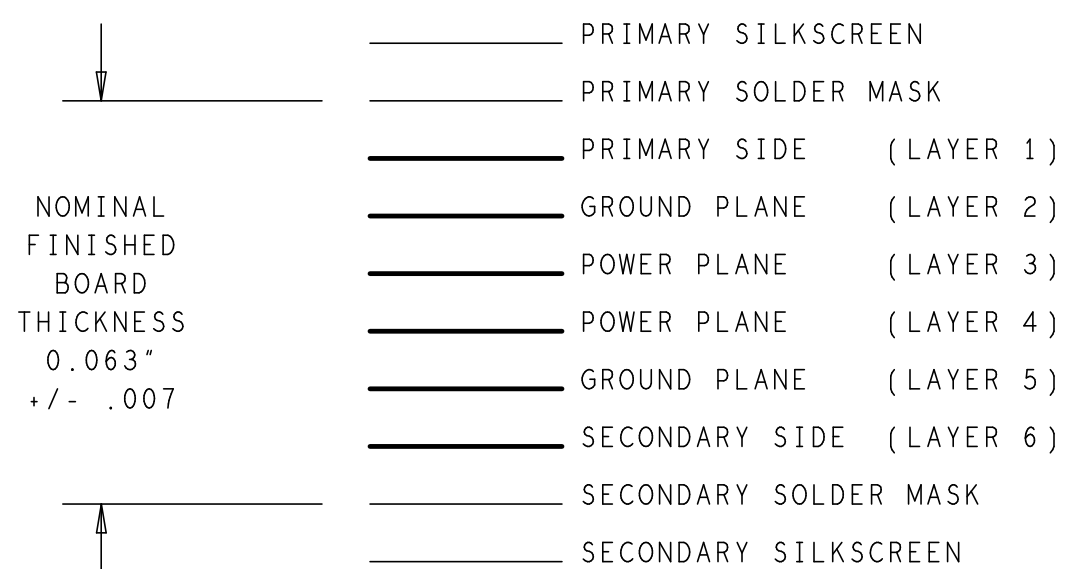
FABRICATION:

- REFER TO IPC-6010 SERIES (LATEST REV.), CLASS 2 FOR FABRICATION UNLESS OTHERWISE SPECIFIED.
- UNDIMENSIONED HOLES TO BE LOCATED WITHIN +/- .005 OF THEIR TRUE POSITION WITH RESPECT TO ARTWORK.
- PLATED HOLE WALL THICKNESS SHALL NOT BE LESS THAN .001 INCH MINIMUM AVERAGE, WITH NO READING LESS THAN .0008 BY CROSS SECTION. HOLE DIAMETERS APPLY AFTER PLATING.
- FINISHED CONDUCTOR WIDTHS SHALL NOT BE REDUCED FROM THE NOMINAL, INDICATED ON THE MASTER PATTERN, BY MORE THAN THE CONDUCTOR THICKNESS.
- MINIMUM DESIGN LINE WIDTH IS .005 INCH.
- MINIMUM DESIGN SPACING IS .005 INCH.
- BOARD/PANEL MUST MEET IPC-A-600 (LATEST REV.) CLASS 2 FOR FLATNESS.
- MFGR. TO LEGIBLY ETCH OR STAMP/SCREEN WITH PERMANENT NON-CONDUCTIVE INK ON SECONDARY SIDE IN A CLEAR AREA UNLESS OTHERWISE INDICATED;
 - A. U.L. CODE
 - B. DATE CODE (STAMP)
 - C. FLAMMABILITY RATING
 - D. MFGR. LOGO
 - E. SUCCESSFUL ELECTRICAL BOARD TEST.
- NON-FUNCTIONAL PADS MAY BE REMOVED FROM INNER SIGNAL LAYERS AT MFGR. DISCRETION.
- IF PAD SIZES PROVIDED ARE NOT LARGE ENOUGH TO MAINTAIN ANNULAR RING REQUIREMENT, MFGR. MAY TEAR DROP PADS TO MAINTAIN ANNULAR RING AT PAD TO CIRCUIT INTERFACE ONLY AND MUST INSURE ELECTRICAL INTEGRITY.
- REPAIRS PER IPC-R-700 ARE ALLOWED.
- MODIFICATIONS TO THE ARTWORK, OTHER THAN THOSE DESCRIBED ON THE FABRICATION DRAWING, ARE NOT ALLOWED WITHOUT WRITTEN AUTHORIZATION.
- FINISH: SURFACES SHALL HAVE ENIG FINISH PLATED WITH 2-6 MICROINCHES OF IMMERSION GOLD OVER 100-200 MICROINCHES OF ELECTROLESS NICKEL.



PRIMARY SIDE

6 LAYER STACKUP



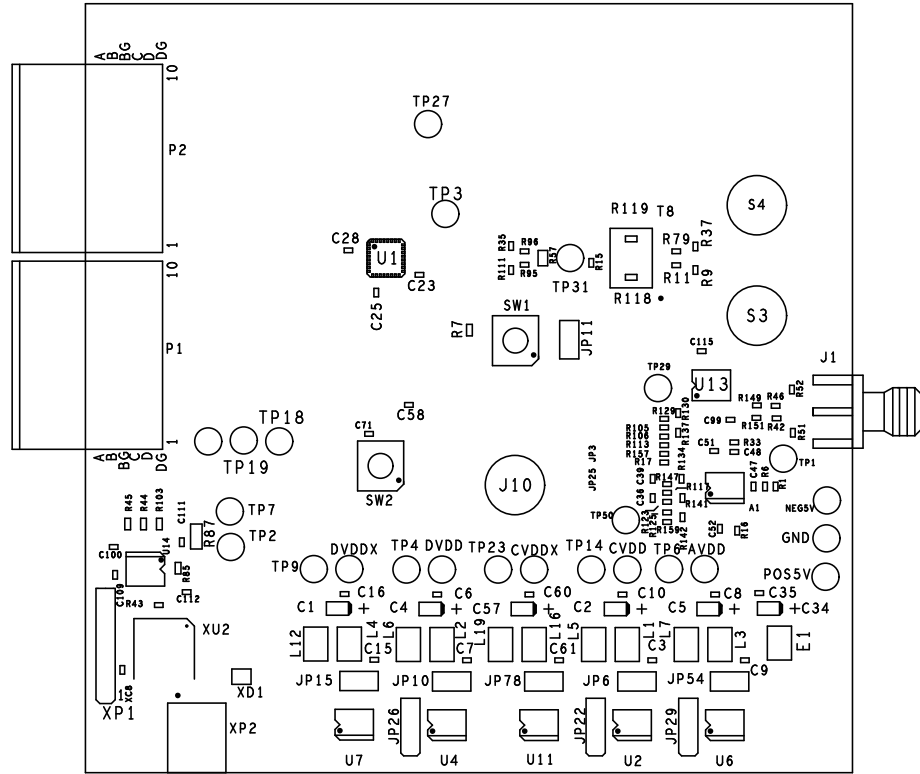
CHARACTERISTIC IMPEDANCE = 50 OHMS +/- 10%
 ARTWORK LINE WIDTH FOR IMPEDANCE CONTROLLED LINES = 0.008"
 DIFFERENTIAL IMPEDANCE = 100 OHMS +/- 10%
 ARTWORK LINE WIDTH FOR IMPEDANCE CONTROLLED LINES = 0.005"

HOLE TOLERANCE
 UNLESS SPECIFIED
 PLATED: +/- .003
 NON PLATED: +/- .001

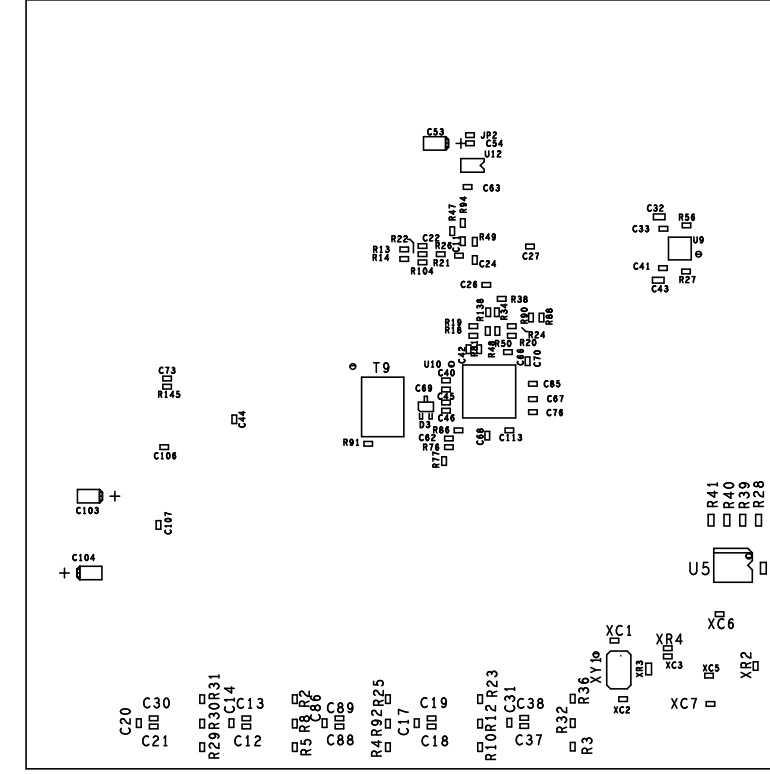
FINISHED HOLES IN MILS				
ALL UNITS ARE IN MILS				
FIGURE	SIZE	PLATED	QTY	TOLERANCE/NOTES
+	10.0	PLATED	14	
□	12.0	PLATED	274	
A	15.0	PLATED	8	
B	16.0	PLATED	171	
C	25.0	PLATED	2	
D	25.0	PLATED	118	
E	40.0	PLATED	12	
F	45.0	PLATED	15	
G	60.0	PLATED	15	
H	63.0	PLATED	24	
J	40.0	NON-PLATED	2	
K	125.0	NON-PLATED	4	

UNLESS OTHERWISE SPECIFIED DIMENSIONS ARE IN INCHES TOLERANCES DECIMALS FRACTIONS ANGLES .XX +/- .010 --1/32 +/- 2 .XXX +/- .005	NCDRILL		ANALOG DEVICES		HSC DIVISION 804 WOBURN STREET WILMINGTON, MA 01887	
	APPROVAL	DATE	TITLE			
MATERIAL	DRAWN BY P.M.A.	23JUL09	AD9707 EVALUATION BOARD			
FINISH	DESIGNED		SIZE	FSCM NO	DRAWING NUMBER	REV
	CHECKED		C		HSC 10055	B
DO NOT SCALE DWG	APPROVED		SCALE	1/1	SHEET 1 OF 1	
	MFG ENGINEER					


REVISIONS			
REV	DESCRIPTION	DATE	APPROVED
A	INITIAL RELEASE	2NOV10	N.E.
B	ADDED AVDD_L_IN VALUE CHANGES	2MAR11	B.H.



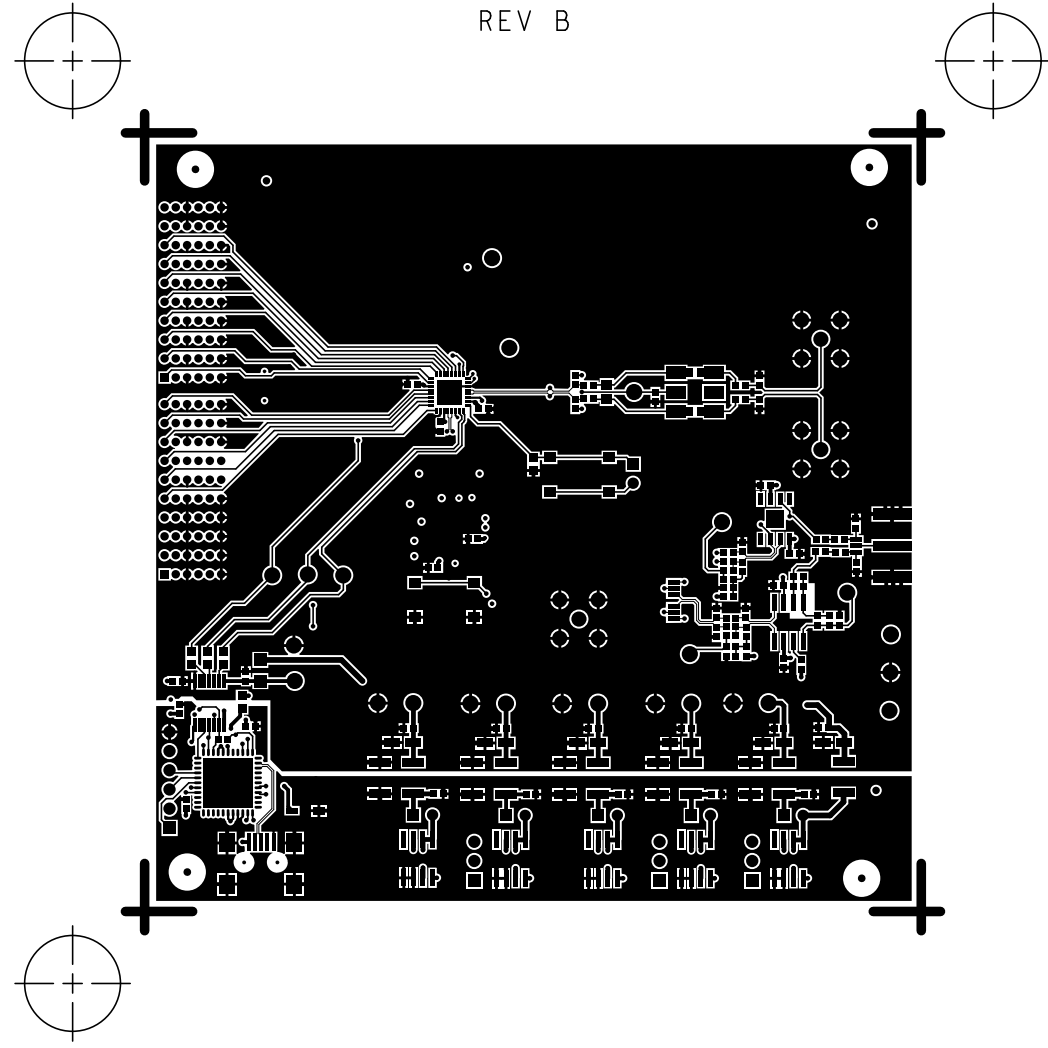
PRIMARY SIDE



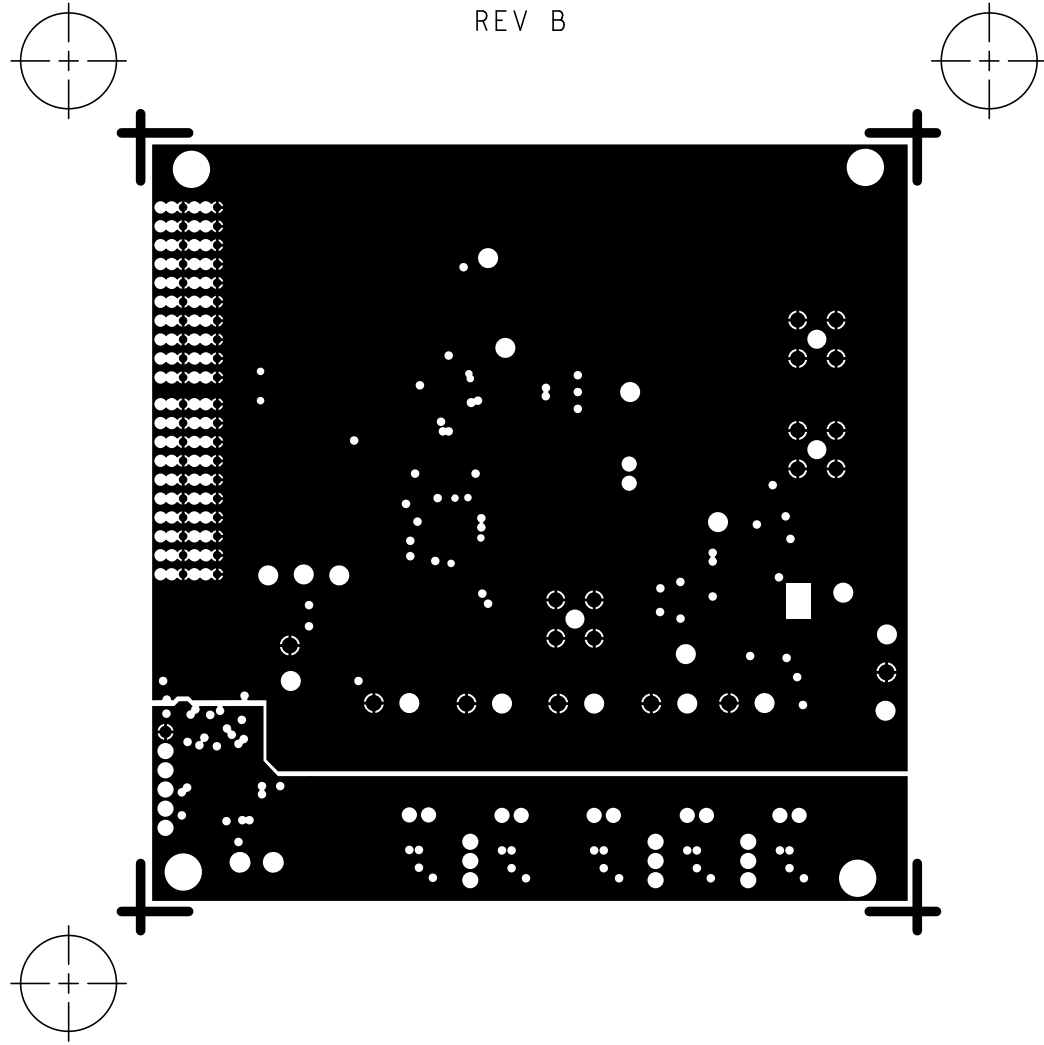
SECONDARY SIDE

UNLESS OTHERWISE SPECIFIED DIMENSIONS ARE IN INCHES TOLERANCES DECIMALS FRACTIONS ANGLES .XX ±.010 ±.1/32 ±.2 .XXX ±.005	ASSEMBLY		 HSC DIVISION 804 WOBURN STREET WILMINGTON, MA 01887			
	APPROVAL	DATE	TITLE			
MATERIAL	DRAWN BY P.M.A.	23JUL09	AD9707 EVALUATION BOARD			
FINISH	DESIGNED		SIZE	FSCM NO	DRAWING NUMBER	REV
	CHECKED					
DO NOT SCALE DWG	APPROVED		SCALE	1/1	SHEET 1 OF 1	
	MFG ENGINEER					

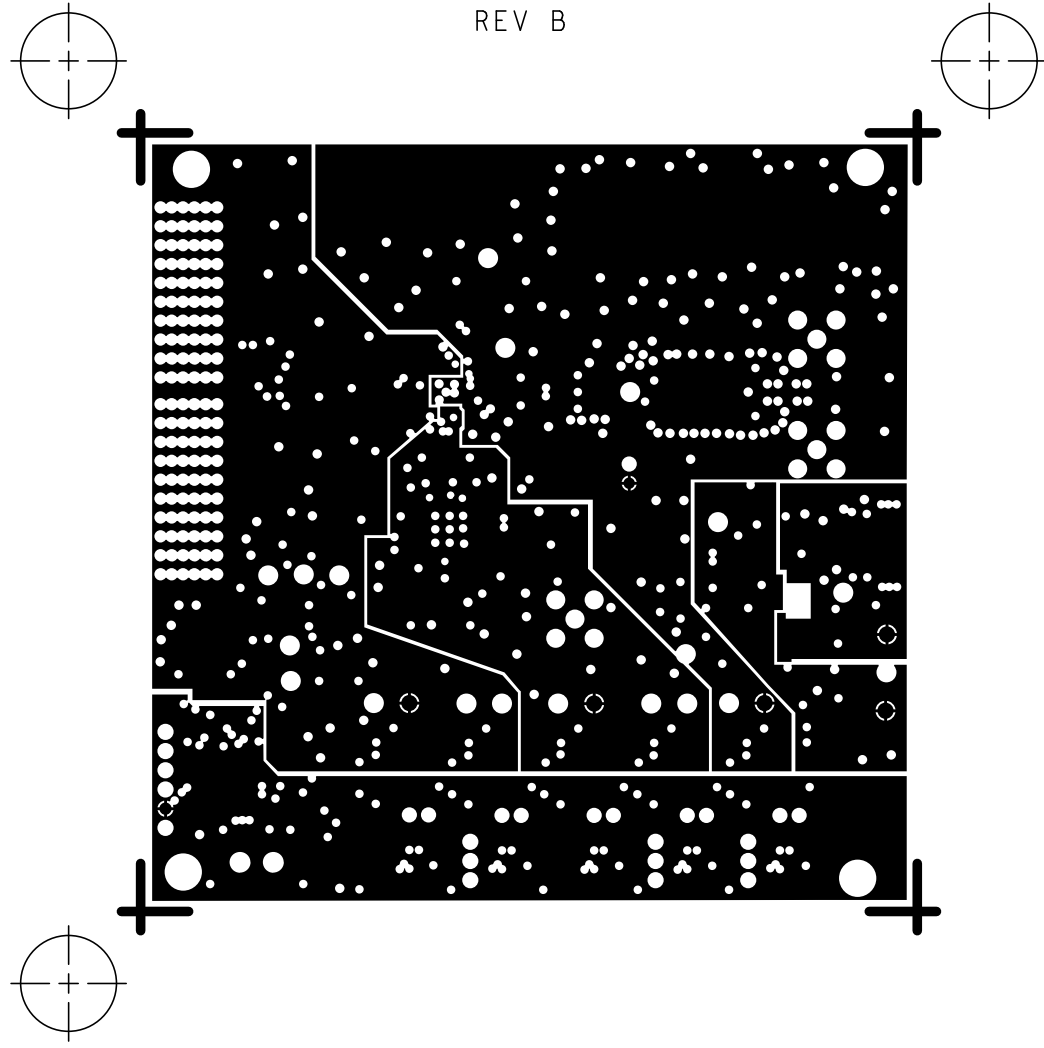
L1 PRIMARY
HSC 10055
REV B



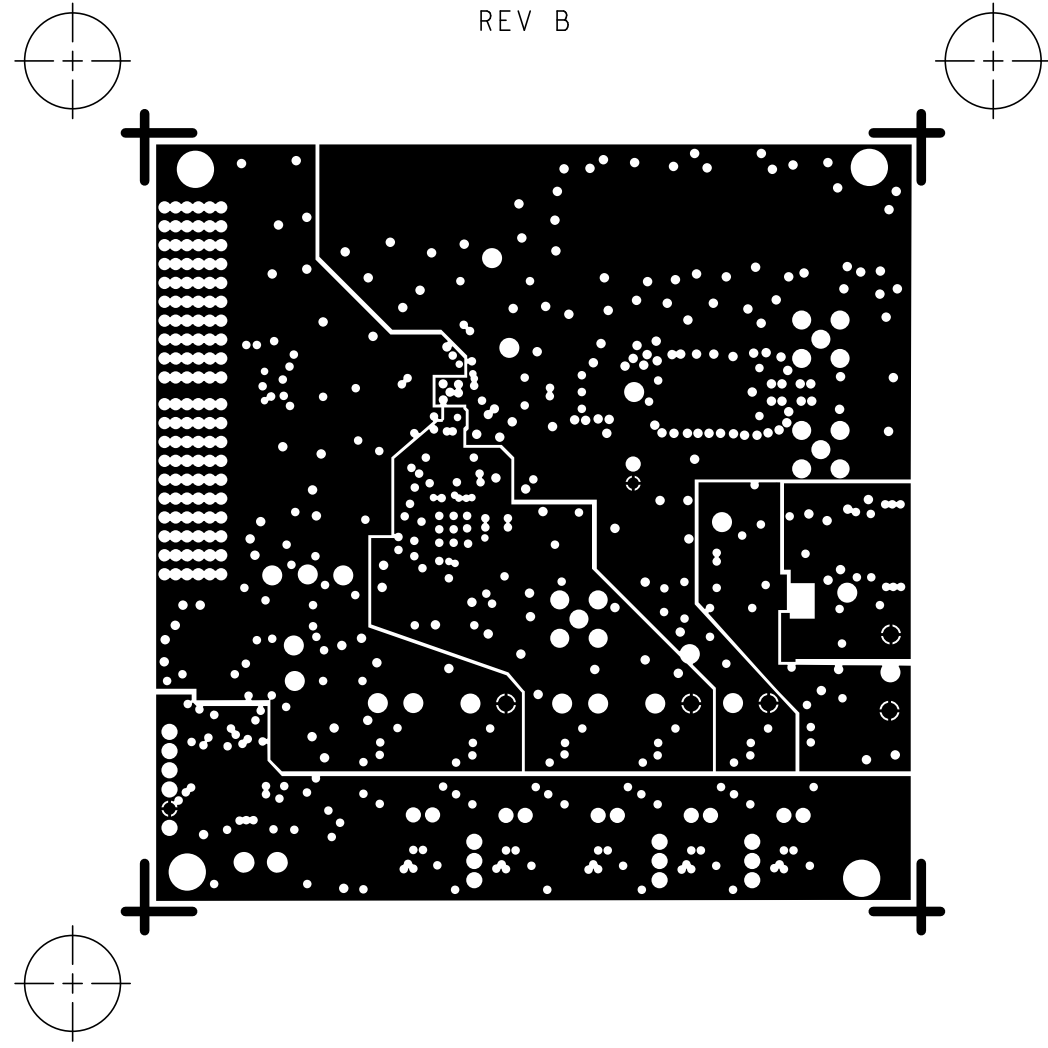
L2 GROUND
HSC 10055
REV B



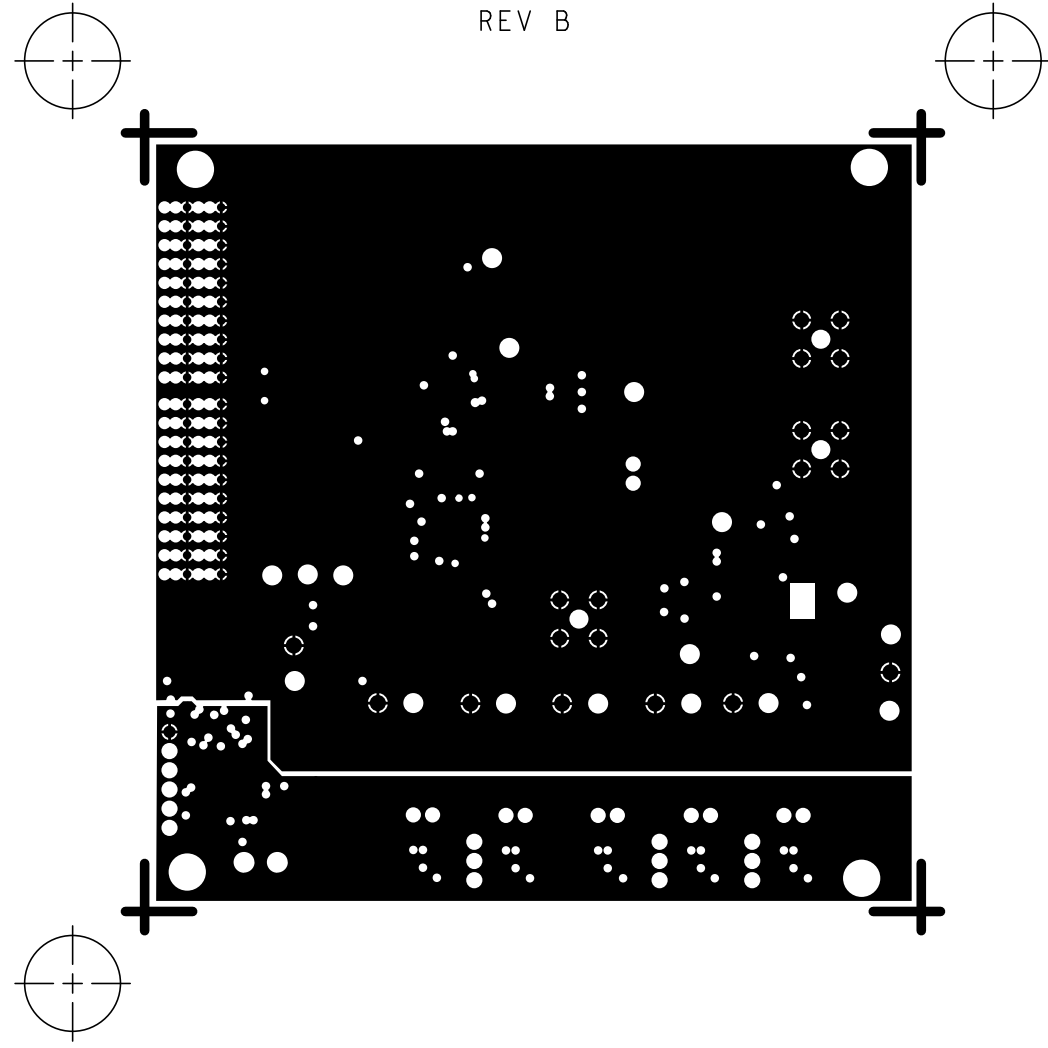
L3 POWER
HSC 10055
REV B



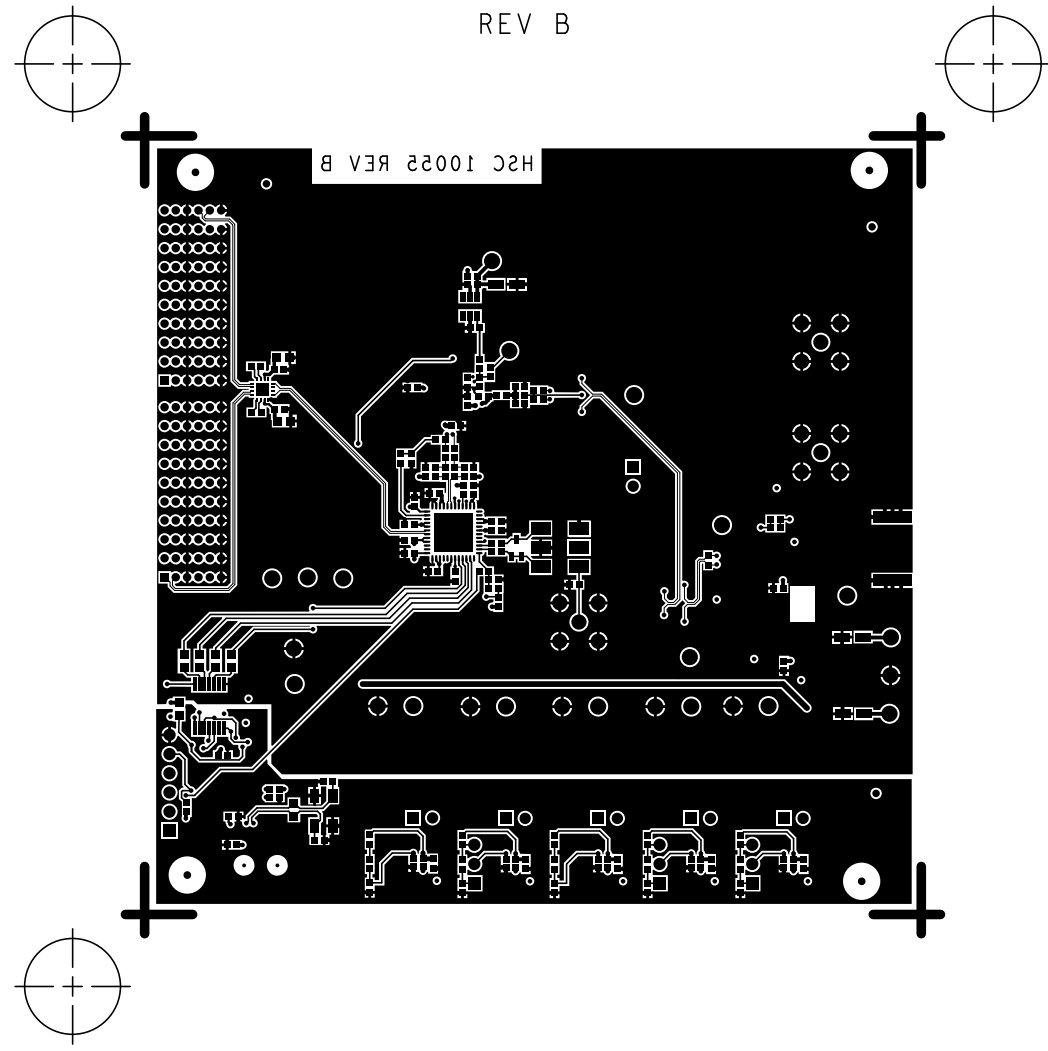
L4 POWER
HSC 10055
REV B



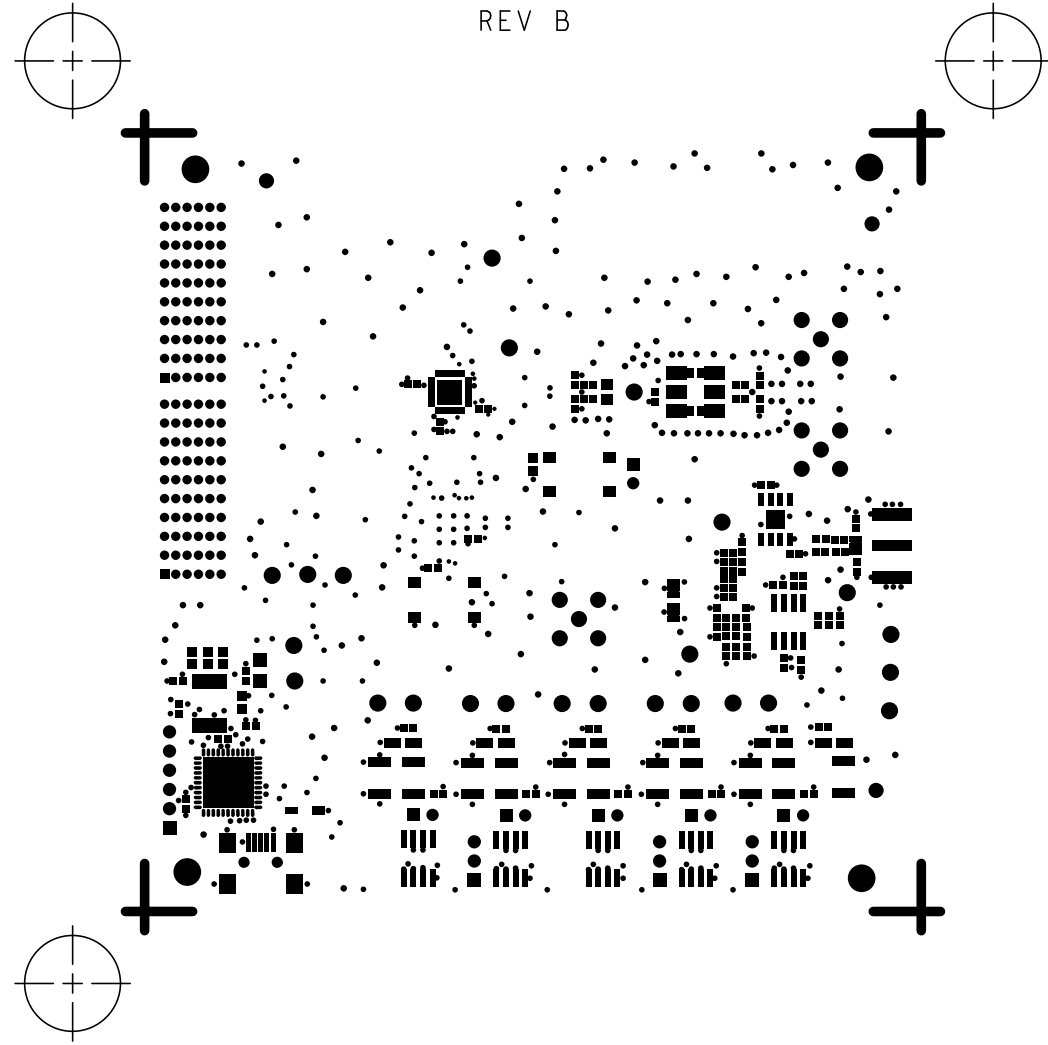
L5 GROUND
HSC 10055
REV B



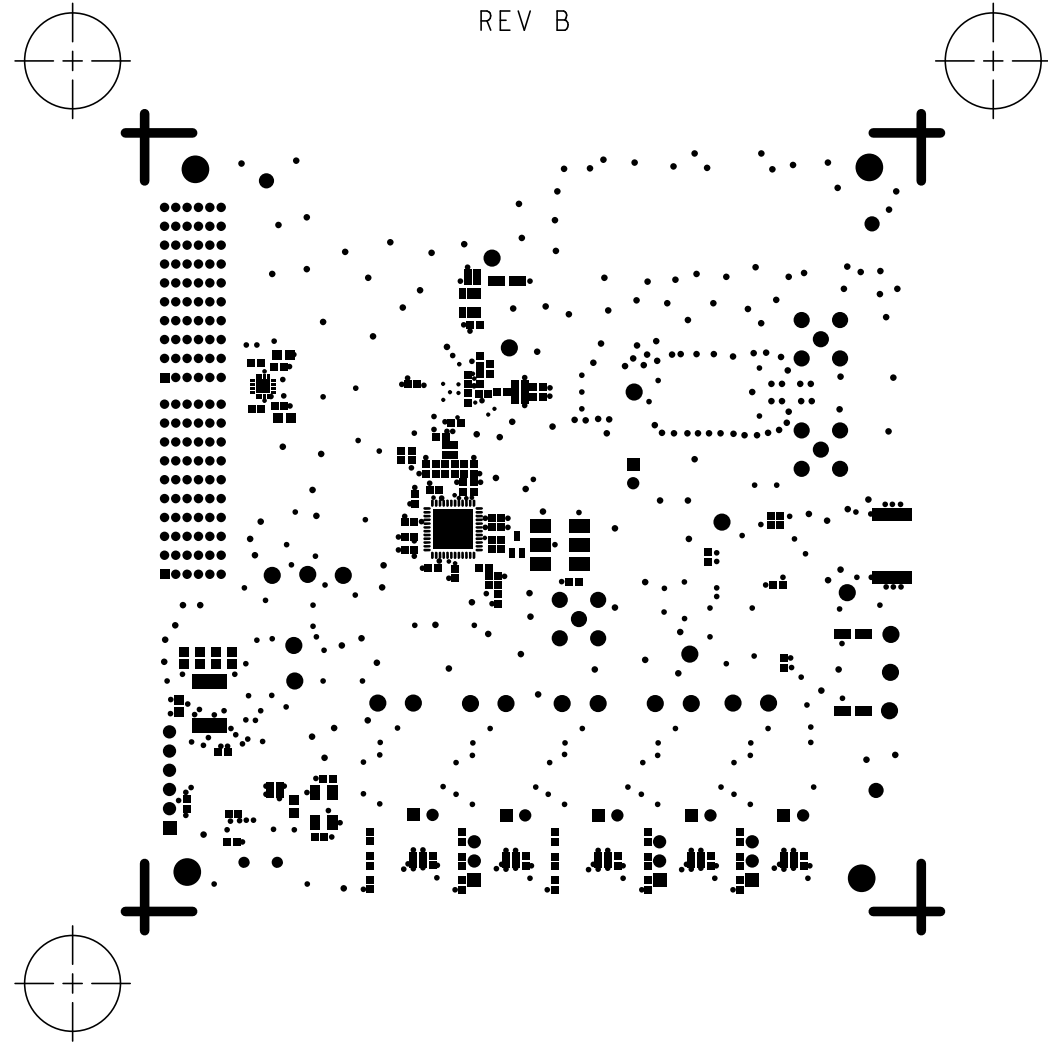
L6 SECONDARY
HSC 10055
REV B



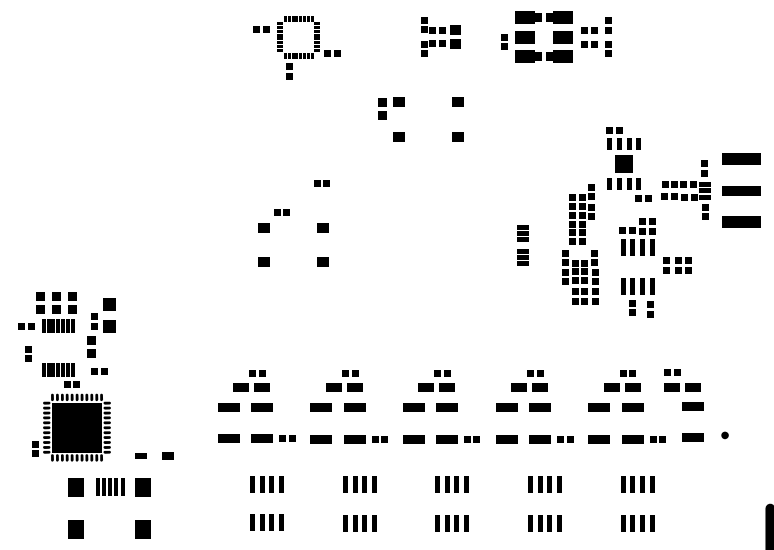
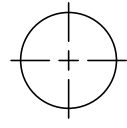
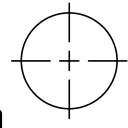
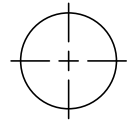
SOLDERMASK PRIMARY
HSC 10055
REV B



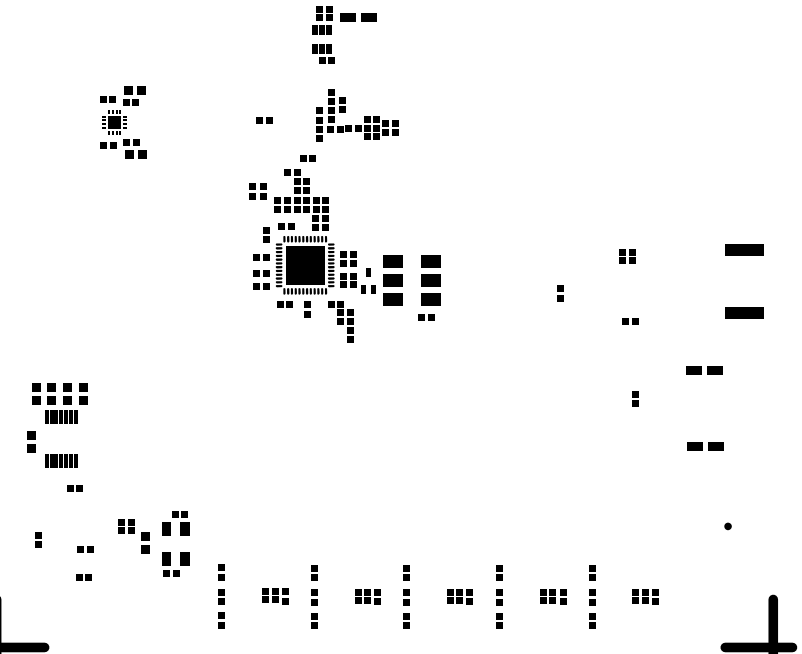
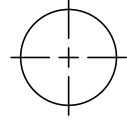
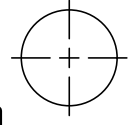
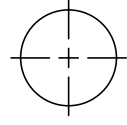
SOLDERMASK SECONDARY
HSC 10055
REV B



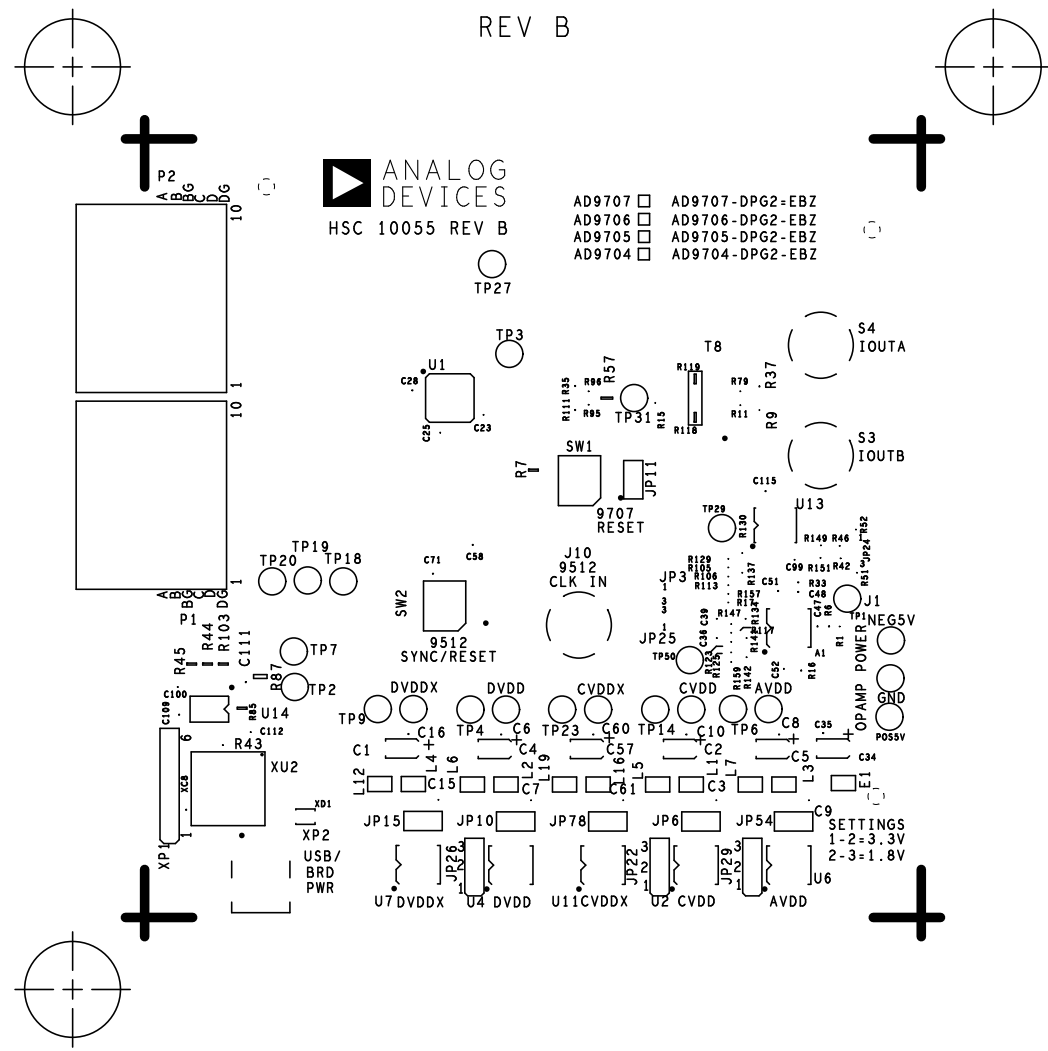
PASTEMASK PRIMARY
HSC 10055
REV B



PASTEMASK SECONDARY
HSC 10055
REV B



SILKSCREEN PRIMARY
HSC 10055
REV B



 **ANALOG
DEVICES**

AD9707 AD9707-DPG2-EBZ
AD9706 AD9706-DPG2-EBZ
AD9705 AD9705-DPG2-EBZ
AD9704 AD9704-DPG2-EBZ

HSC 10055 REV B

S4 IOUTA

S3 IOUTB

J13

J1

OPAMP POWER

TP27

TP26

TP25

TP24

TP23

TP22

TP21

TP20

TP19

TP18

TP17

TP16

TP15

TP14

TP13

TP12

TP11

TP10

TP9

TP8

TP7

TP6

TP5

TP4

TP3

TP2

TP1

TP0

TP

TP

TP

TP

TP

J10

CLK IN

SW2

9512

SYNC/RESET

DVDDX

DVDD

CVDDX

CVDD

AVDD

AVDD

AVDD

AVDD

AVDD

AVDD

AVDD

AVDD

AVDD

AVDD

AVDD

AVDD

AVDD

AVDD

AVDD

AVDD

AVDD

AVDD

AVDD

AVDD

AVDD

AVDD

AVDD

AVDD

AVDD

AVDD

SETTINGS

1-2-3-3V

2-3-1-8V

U7DVDDX

U4DVDD

U1CVDDX

U2CVDD

AVDD

AVDD

AVDD

AVDD

AVDD

AVDD

AVDD

AVDD

AVDD

AVDD

AVDD

AVDD

AVDD

AVDD

AVDD

AVDD

AVDD

AVDD

AVDD

AVDD

AVDD

AVDD

AVDD

AVDD

SILKSCREEN SECONDARY
HSC 10055
REV B

