

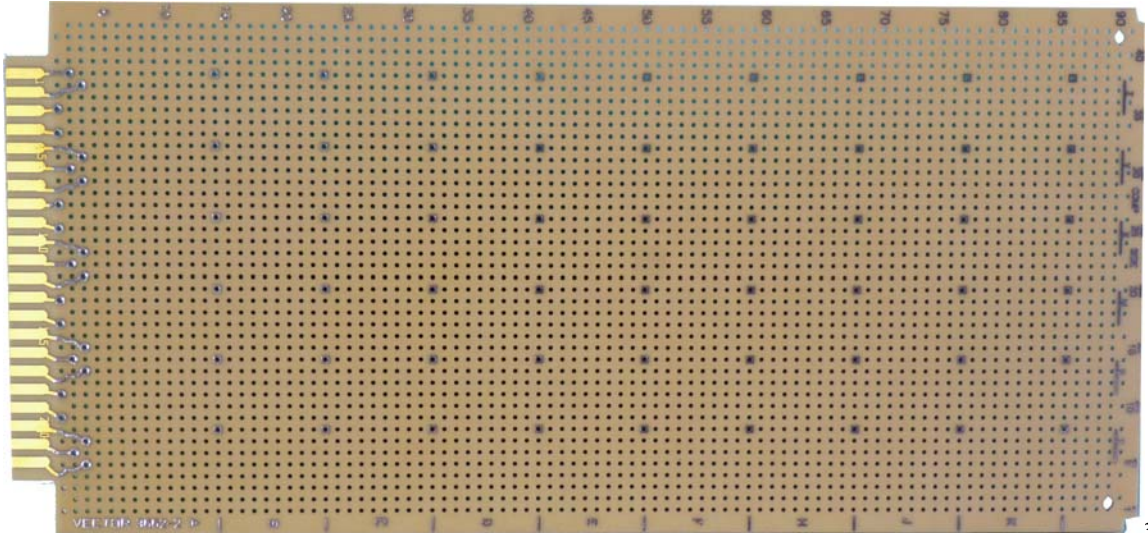






Home
About Vector
Distributors
Sales
Contact Us
Catalog Request

VECTORBORD®PLUGBORD™ PART NO. : 3662-2



3662

-2 (SHOWN COMPONENT SIDE)

Description :

- 4.5" X 9.6" X 0.062, Hole Dia.: 0.042", Grid: 0.100" X 0.100"
- Plated Contacts Only
- Unrestricted component placement over entire board surface
- Row and column legends provided
- Layout paper [Layout Paper\(PDF\)](#)

Circuit Pattern :	Plated Contacts Only
Contacts :	22/44 @ 0.156" Centers Ni / Gold
16 Pin DIP Capacity :	25
Hole Diameter :	0.042" { 1.0668 mm }
Grid :	0.100" X 0.100" { 2.54mm X 2.54mm }
Dimension { H, W, T } :	4.5" X 9.6" X 0.062"
Material :	CEM-1
Wire-Wrap Terminals :	T44, T46, T49 & T68
Solder Connector :	R644
Wire-Wrap Socket Pins :	R32
Wire-Wrap Connector :	R644-3
Extender :	3690
Recommended Card Cage:	CCK 13 Series Card Cage { Subracks }
UL Flammability Class :	94V - 0

email us your requirements: inquire@vectorelect.com

11115 Vanowen St., North Hollywood, CA 91605, USA

Tel.: (818) 985 8208, (800) 423 5659; Fax : (818) 985 7708

Circbord®, Vectorbord® and VectorPak® are registered trademarks of Vector Electronics & Technology, Inc. CompactPCI® is a registered trademark of PCIMG. © 2001 Vector Electronics & Technology, Inc. - All Rights Reserved